

**BALDOR® • RELIANCE** 

**Product Information Packet**

**EM4313T-G**

**75HP,3560RPM,3PH,60HZ,365TS,A36068M,TEFC**

Part Detail							
Revision:	M	Status:	PRD/A	Change #:		Proprietary:	No
Type:	AC	Elec. Spec:	A36WG3694	CD Diagram:	416820-002	Mfg Plant:	
Mech. Spec:		Layout:	617428-025	Poles:	02	Created Date:	12-15-2011
Base:		Eff. Date:	03-11-2019	Leads:	3#2,6#4		

Specs			
Catalog Number:	EM4313T-G	Design Code:	B
Enclosure:	TEFC	Drip Cover:	No Drip Cover
Frame:	365TS	Duty Rating:	CONT
Frame Material:	Iron	Feedback Device:	NO FEEDBACK
Output @ Frequency:	60.000 HP @ 50 HZ	Heater Indicator:	No Heater
	75.000 HP @ 60 HZ	Insulation Class:	H
Synchronous Speed @ Frequency:	3600 RPM @ 60 HZ	Inverter Code:	Inverter Ready
Voltage @ Frequency:	380.0 V @ 50 HZ	KVA Code:	G
	230.0 V @ 60 HZ	Lifting Lugs:	Standard Lifting Lugs
	190.0 V @ 50 HZ	Motor Lead Quantity/Wire Size:	3 @ 2 AWG
	460.0 V @ 60 HZ	Motor Type:	A36068M
XP Class and Group:	None	Mounting Arrangement:	F1
XP Division:	Not Applicable	Power Factor:	90
Agency Approvals:	CSA EEV	Product Family:	General Industrial
	CCSA US	Pulley End Bearing Type:	Ball
Auxillary Box:	No Auxillary Box	Pulley Face Code:	Standard
Base Indicator:	Rigid	Shaft Ground Indicator:	Shaft Grounding
Bearing Grease Type:	Polyrex EM (-20F +300F)	Shaft Rotation:	Reversible

<b>Current @ Voltage:</b>	81.900 A @ 460.0 V	<b>Shaft Slinger Indicator:</b>	No Slinger
	79.800 A @ 380.0 V	<b>Speed Code:</b>	Single Speed
	181.000 A @ 208.0 V	<b>Motor Standards:</b>	NEMA
	163.000 A @ 230.0 V	<b>Starting Method:</b>	Direct on line
		<b>Thermal Device - Bearing:</b>	None
		<b>Thermal Device - Winding:</b>	None

Nameplate NP2496L

MOBIL POLYREX EM

Nameplate NP2381L			
SPEC NO.	A36-1306-3694	CAT.NO.	EM4313T-G
HP	75//60	PHASE	3
RPM	3560//2960	DESIGN	B
VOLTS	230/460//190/380	TYPE	P
AMPS	163/81.9//160/79.8	AMB	40
DRIVE END BEARING	65BC03J30X	SF	1.15
OPP D.E. BEARING	65BC03J30X	DUTY	CONT
SER.NO.		ENCL	TEFC
		INSUL.CLASS	H
		CODE	G
		NEMA-NOM-EFFICIENCY	94.5
		USABLE AT 208V @ 181 AMPS	
		VPWM INV DUTY 10:1 CT AT 1.0SF	
		MOTOR WEIGHT	
		FRAME	365TS

Parts List		
Part Number	Description	Quantity
SA235867	SA A36-1306-3694	1.000 EA
RA222824	RA A36-1306-3694	1.000 EA
421948032	LABEL, MYLAR	1.000 EA
NP2496L	MOTOR LUBE NAMEPLATE	1.000 EA
000613006PU	N/P (RELEASE QTY 10,000) UL CSA LABEL	1.000 EA
000692000VD	LABEL WARNING	1.000 EA
NP2381L	SUPER-E ,SS, CSA,CSA SUPER-3	1.000 EA
085922073B	BRKT 360 085922072WCC KB	1.000 EA
415072001B	CLAMP	1.000 EA
078559001A	+FANCV - 360	1.000 EA
034180012DA	KEY 1X4X1/4X1-1/2 L	1.000 EA
702675001C	FAN 360	1.000 EA
004824015A	GREASE POLYREX EM	0.540 LB
032018012DK	HHCS 1/2-13X1-1/2 PLTD.	4.000 EA
032018008AK	HHCS 1/4-20X1 PLATED	4.000 EA
032018024CK	HHCS 3/8-16X3 PLTD.	3.000 EA
415096002A	CPLG 1/8 HEX TYPE	1.000 EA
410700004F	WSHR	1.000 EA
035000001G	GREASE RELIEF FITTING, ALEMITE 317400	1.000 EA
035000001G	GREASE RELIEF FITTING, ALEMITE 317400	1.000 EA
034530052AB	P/NIP 1/8X6-1/2 GALV.	1.000 EA
034690001AB	1/8" NPT SQHDPLG	1.000 EA
034600001AA	BUSH 1/4TO1/8 BLACK	1.000 EA
034690001AB	1/8" NPT SQHDPLG	1.000 EA

Parts List (continued)		
Part Number	Description	Quantity
034600001AA	BUSH 1/4TO1/8 BLACK	1.000 EA
085922073B	BRKT 360 085922072WCC KB	1.000 EA
415045002E	SLGR	1.000 EA
032018012DK	HHCS 1/2-13X1-1/2 PLTD.	4.000 EA
032018024CK	HHCS 3/8-16X3 PLTD.	3.000 EA
077176000L	C/BOX, 360-400	1.000 EA
BP5327	SHAFT GRD BRUSH (SGR-74.7-3CFHAT2)	1.000 EA
077176001A	CBOXC, PAINTED 360-400	1.000 EA
043292000AJ	GASK 320-400	1.000 EA
402731001A	GASK 360-440	1.000 EA
418150003A	GREASE FITTING CAP	1.000 EA
MG1025Y17	WILKOFASST, 789.701, SUPER E PEARL GOLD	1.000 GA
032018005AK	HHCS 1/4-20X5/8 PLATED	4.000 EA
032018008CK	HHCS 3/8-16X1L PLATED	4.000 EA
035000001A	ALFTG 1/8" 1610-BL	1.000 EA
035000001A	ALFTG 1/8" 1610-BL	1.000 EA
418150003A	GREASE FITTING CAP	1.000 EA
415000103D	T/LUG #4AWG-1/0AWG W/HOLE FOR .250 BOLT	1.000 EA
406099000A	PLUG - FAN COVER 320-440	1.000 EA
033512004LB	HHTTS 1/4-20X1/2 PLTD.	1.000 EA
033775004EA	DRSCR #6-1/4 304 S.S.	2.000 EA
034180016GA	KEY 1/2X1/2X2 L	1.000 EA
HW1000A32	5/16 FL WASHER WIDE,ID=.344,OD=1.125	3.000 EA
032509020C	CARRIAGE BOLT - 360	3.000 EA

14PA1000	PACKAGING 314 GROUP COMBINED PRINT	1.000 EA
----------	------------------------------------	----------

S/O	FRAME	HP	TYPE	PHASE/ HERTZ	RPM	VOLTS
	365	75	P	3/60	3560	230/460
AMPS	DUTY	AMB °C/ INSUL	S.F.	NEMA DESIGN	CODE LETTER	ENCLOSURE
163/81.9	CONT	40/H	1.15	B	G	TEFC
E/S	ROTOR	TEST S.O.	TEST DATE	STATOR RES. @25 °C OHMS (BETWEEN LINES)		
492274	418141005AE	---	---	.0203/.0813		

**PERFORMANCE**

LOAD	HP	AMPERES	RPM	% POWER FACTOR	% EFFICIENCY
NO LOAD	0	19.1	3600	6.18	0
1/4	18.8	27.2	3591	69.5	93.0
2/4	37.5	42.9	3582	86.2	95.2
3/4	56.2	61.6	3572	89.6	95.4
4/4	75.0	81.9	3562	90.1	95.1
5/4	93.7	103	3552	90.2	94.6


**SPEED TORQUE**

	RPM	% TORQUE FULL LOAD	TORQUE LB.-FT.	AMPERES
LOCKED ROTOR	0	168	185	542
PULL UP	720	136	150	533
BREAKDOWN	3395	283	313	340
FULL LOAD	3562	100	111	81.9

AMPERES SHOWN FOR 460 VOLT CONNECTION. IF OTHER CONNECTIONS ARE AVAILABLE, THE AMPERES WILL VARY INVERSELY WITH THE RATED VOLTAGE.

**TYPICAL DATA**

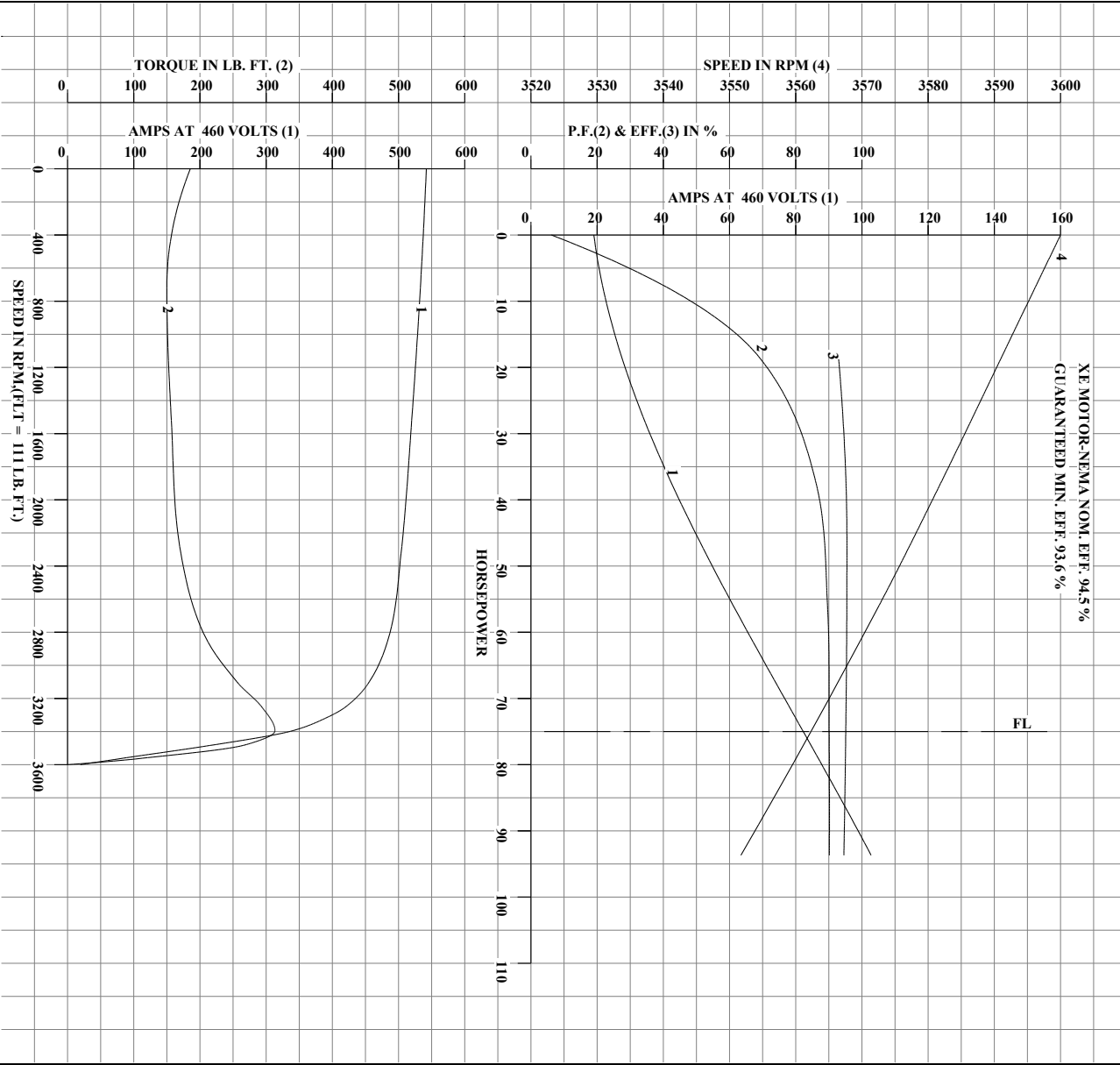
XE MOTOR-NEMA NOM. EFF. 94.5 %  
GUARANTEED MIN. EFF. 93.6 %

	DRAWN BY: G. R. WEBB	AC MOTOR PERFORMANCE DATA	<b>A36WG3694-R002</b> DATE ISSUED 11/23/11
	CHECKED BY: W. L. SMITH APPROVED BY: W. L. SMITH DATE: 11/23/11		

USERCHR1

Printed on 01/08/2019 11:44 AM

REL.S.O.	365	RPM	3560	S.F.	1.15	ROTOR	418141005AE
FRAME	365	VOLTS	230/460	NEMA DESIGN	B	TEST S.O.	TYPICAL DATA
HP	75	AMPS	163/81.9	CODE LETTER	G	TEST DATE	--
TYPE	P	DUTY CONT		ENCLOSURE	TEFC	STATOR RES. @ 25°C	.0203/0813
PHASE/HERTZ	3/60	AMB °C/INSUL	40/H	E/S	4922/74	OHMS (BETWEEN LINES)	

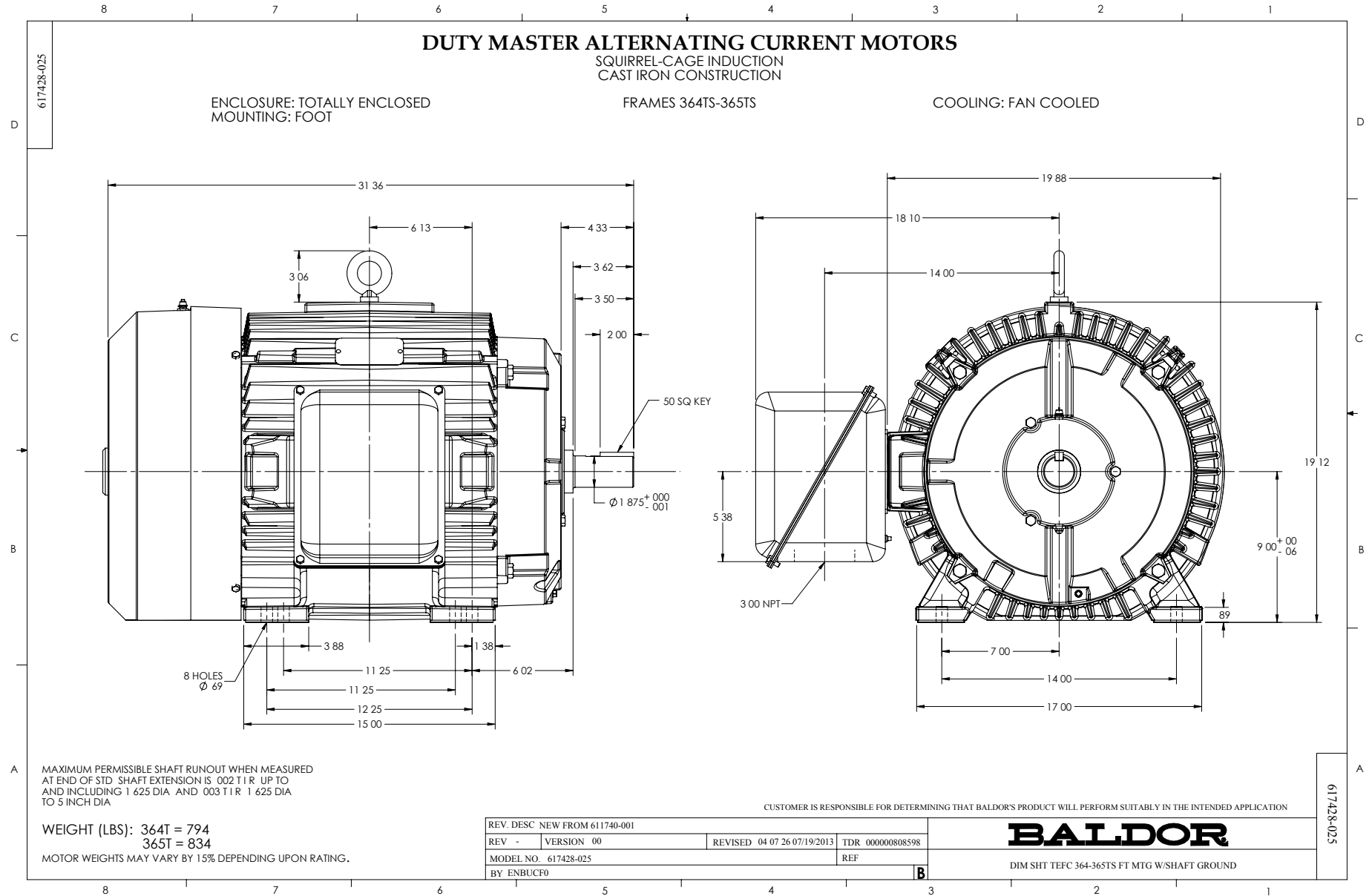


AMPERES SHOWN FOR 230/460 VOLT CONNECTION, IF OTHER VOLTAGE CONNECTIONS ARE AVAILABLE, THE AMPERES WILL VARY INVERSELY WITH THE RATED VOLTAGE.

	DRAWN BY: G. R. WEBB	<b>AC MOTOR PERFORMANCE DATA</b>	<b>A36WG3694-R002</b>
	CHECKED BY: W. L. SMITH APPROVED BY: W. L. SMITH DATE: 11/23/11		

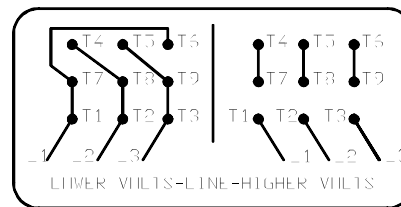
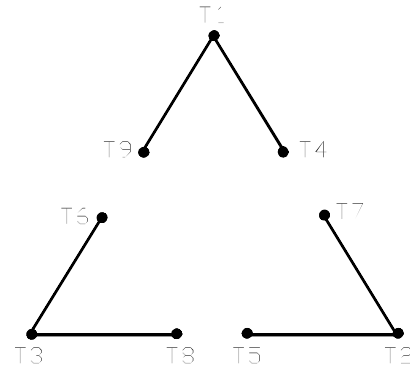
USERCHR1

Printed on 01/08/2019 11:44 AM



416820-002

A-C MOTOR  
 CONNECTION DIAGRAM  
 STANDARD 9 LEAD DELTA-CONNECTED



(N.P. 1575-B)

416820-002

REV. DESC: FONT CHANGE FOR PDF SEARCHABLE		
REV. LTR: A	VERSION: 01	TDR: 000001009382
FILE: \MGA\00000\661	REVISED: 02:46:19 02/13/2020	BY: MGHMTT
MTL: -	⊙ □	

**BALDOR - RELIANCE®**

CONN DIAG - STANDARD 9 LEAD, DELTA-CONNECTED

SH 1 of 1

Marketing maintained PDF of MN408:

[MN408?ManNumber=MN408](#)

Marketing maintained PDF of MN416:

[MN416?ManNumber=MN416](#)